



**High-impact, precision
full colour that lasts**

BradyJet Colour Label Printers

High-impact, precision full colour that lasts

Printing logos, icons, pictures and complex procedures means you need a lot of two things: one is materials and two is time. That is, if you're using the wrong printer. What you need is an inkjet printer that can balance the complexity of safety and compliance labels with the demands of an industrial environment. Say hello to the BradyJet family of industrial inkjet printers.

Get photo-quality, full-colour labels whenever you need them while reducing your inventory of labelling supplies and material waste. BradyJet printers let you create the compliant, long-lasting labels, signs and tags you need to create a safer, more efficient workplace.

- **Create compliant labels and signs** - Trust your regulatory labelling offers the colours needed for ISO, CLP/ GHS, BS5609, ANSI and much more
- **Extend label performance** - Rely on specially formulated materials and ink designed to stand up to harsh environments
- **Maximise impact, improve efficiency and reduce waste** - Stock and print only what you need, when you need, in photo-quality full-colour every time



Going the distance

At Brady, we go the distance to make sure you get what you need. Whether it's field work or lab work, we've got materials for every application.

Barcodes, images, small text - your most important information needs to stay put, in any type of environment. From freezing temperatures to blistering heat, when used with solvents or in outer space, simply put, Brady materials are all about high performance. Our scientists make sure of it. Brady's R&D programme focuses on solutions that bring durability, flexibility and efficiency to every workday.

We offer hundreds of labels, so be sure to browse through the entire collection. And, as always, let us know if you need more.



DANGER

Acetone

! WARNING

Created: July 22, 2021

DANGER

Pinch Operates Keep Hand

Use Handrails

Isopropyl Alcohol 70% Mixed with 30% Water

DANGER

H225 - Highly flammable liquid and vapour
 H319 - Causes serious eye irritation
 H335 - May cause respiratory irritation
 P210 - Keep away from heat, hot surfaces, open flames, sparks
 P231 - Keep container tightly closed
 P233 - Keep container and receiving equipment
 P240 - Ground/bond container and receiving equipment
 P241 - Use explosion-proof electrical, lighting, ventilating
 P242 - Use only non-sparking tools
 P243 - Take precautionary measures against static discharge
 P261 - Avoid breathing mist, vapors, spray
 P264 - Wash exposed skin thoroughly after handling
 P271 - Use only outdoors or in a well-ventilated area
 P273 - Wear eye protection, face protection, protective clothing,
 P280 - Wear protective gloves
 P281 - IF ON SKIN (or hair): Remove/ Take off
 P303+P361+P353 - IF ON SKIN (or hair): Remove/ Take off
 P304+P340 - IF INHALED: Remove person to fresh air and keep
 P305+P351+P338 - IF IN EYES: Rinse cautiously with water for
 P308+P313 - IF SWALLOWED: Rinse mouth. Do not induce vomiting.
 P312 - IF SWALLOWED: Rinse mouth. Do not induce vomiting.
 P314 - IF SWALLOWED: Rinse mouth. Do not induce vomiting.
 P321 - Call POISON CENTER or doctor if you feel unwell.
 P330 - Swallow. Do not induce vomiting.
 P331 - Induce vomiting.
 P332+P313 - IF SWALLOWED: Rinse mouth. Do not induce vomiting.
 P337+P313 - IF SWALLOWED: Rinse mouth. Do not induce vomiting.
 P362+P352 - Remove contaminated clothing. Wash before reuse.
 P373 - Do not empty into drains.
 P391 - Contain spillage, if unavoidable.

ExxonMobil Chemical Company
 PO Box 3272
 Houston, TX 77253-3272 USA
 1-832-433-8599

67-63-0

Chemical Name
METHANOL

Manufacturer
Periodic Corp.

Date 07/21/21

Case UN N

Target Organs
Blood, Bone, Brain, Cardiovascular, F

First Aid
Remove to fresh air and
as needed. Eyes/Skin: re
clothing. Flush with
induce vomiting, co

Acetone

Colorless, highly volatile liquid,
sweet odor, irritating.
Also causes: muscle weakness,
mental confusion, coma (high
concentration). Ingestion: GI
irritation, kidney and liver
damage, metabolic changes,
coma. Chronic: dermatitis.
Highly Flammable

Propylene

Extremely flammable gas. Contains gas
under pressure; may explode if heated.
Keep away from heat, hot surfaces, sparks,
open flames and other ignition sources. No
smoking. Leaking gas fire: Do not
extinguish, unless leak can be stopped
safely. Eliminate all ignition sources if safe
to do so. Protect from sunlight. Store in a
well-ventilated place.

DANGER

Brady Corporation
6555 Good Hope Rd
Milwaukee, WI 53223
(888) 250-3082

DANGER

Bill Stevens
ext. 420

DANGER

DO NOT OPERATE!

Equipment Locked Out!
My Life is On The Line!
Only the person shown may remove this tag.

This lock/tag may only be removed by

Name: Bill Stevens mobile 729-865-8500
Date: 07.24.2021

3rd Floor Eng. Services

BRADY

Propylene

Extremely flammable gas. Contains gas
under pressure; may explode if heated.
Keep away from heat, hot surfaces, sparks,
open flames and other ignition sources. No
smoking. Leaking gas fire: Do not
extinguish, unless leak can be stopped
safely. Eliminate all ignition sources if safe
to do so. Protect from sunlight. Store in a
well-ventilated place.

DANGER

Brady Corporation
6555 Good Hope Rd
Milwaukee, WI 53223
(888) 250-3082

SAFETY DATA SHEET

DANGER

METHANOL

IMPACTFUL COLOUR WHERE YOU NEED IT

BradyJet J2000 Colour Label Printer

Smaller labels and volume don't lessen the impactful colour identification you need. The BradyJet J2000 quickly and easily creates any colour you need for specific regulations and effective identification - but not at the expense of productivity. This compact mid-volume inkjet solution is capable of producing up to 3,000 labels per day up to 101.6 mm wide to deliver the full-colour labels and signs everywhere you need them.

- **Precise identification quickly** - More efficient printing means you keep your workplace running smoothly and safely
- **Fits your work style and space** - Thanks to its lightweight, compact footprint, the BradyJet J2000 can be moved easily wherever your work demands



Specifications

Software and Connectivity	
Connectivity Options	USB
Software Compatibility	Brady Workstation Windows based driver for 3rd party software use
User Interface Type	PC
Operating System	Windows® 7, Windows® 8, Windows® 10
Physical/Operational Characteristics	
Dimensions	264.16 mm (W) x 180.34 mm (H) x 388.62 mm (D)
Weight (kg)	3.20
Printer Features	
Recommended Usage per Day	3000
Print Technology	Inkjet
Colour Capability	Full Colour
Print Resolution (dpi)	4800
Max. Print Width (mm)	101.60
Max. Label Width (mm)	101.60
Max. Print Length (mm)	609.60
Media Format	Media on Roll and Ink in Cartridge, supplied separately
Print Speed (mm/sec)	63.50
Includes	This kit contains a J2000 printer, a power cord and AC adapter, a USB cable, a Quick Start Guide, an ink cartridge, a material roll for printhead alignment, a USB stick with drivers and manuals and a Brady Workstation Basic Suite
Display	None

Printers

Article No.	Order Ref.	Description
150157	J2000-UK	BradyJet J2000 Colour Label Printer - UK
150159	J2000-EU	BradyJet J2000 Colour Label Printer - EU
150162	J2000	BradyJet J2000 Colour Label Printer - US
199966	J2000-EU-LABS	BradyJet J2000 Colour Label Printer - EU with Brady Workstation LAB Suite
199967	J2000-UK-LABS	BradyJet J2000 Colour Label Printer - UK with Brady Workstation LAB Suite
199968	J2000-EU-SFIDS	BradyJet J2000 Colour Label Printer - EU with Brady Workstation SFID Suite
199969	J2000-UK-SFIDS	BradyJet J2000 Colour Label Printer - UK with Brady Workstation SFID Suite
199971	J2000-US-LABS	BradyJet J2000 Colour Label Printer - US with Brady Workstation LAB Suite
199972	J2000-US-SFIDS	BradyJet J2000 Colour Label Printer - US with Brady Workstation SFID Suite



The Basic Suite is included with every printer, download it: Workstation.BradyID.com/Free



Ensure labels for all your lab samples and equipment are crisp, clear, readable and contain all necessary information. Easily design and create labels for your cryovials, centrifuge tubes, bottles, conicals, slides and other samples in your laboratory. Workstation.BradyID.com/LAB



Keep your facility safe and compliant by creating custom signs, label and pipemarkers, adding visual safety guidance. Workstation.BradyID.com/SafetyAndFacility

Ink and accessories

Article No.	Order Ref.	Description
150154	J20-CMY	CMY pigment based ink cartridge for J2000 Printer
150160	J20-CUTTER	Replacement Cutter Blade for J2000
150163	J20-PAD	Replacement Ink Pads for J2000

B-7425J chemically resistant polypropylene material

This polypropylene material is ideal for GHS and other full-colour identification applications where resistance to harsh chemicals is required.

Article No.	Order Ref.	Dimensions	Quantity
150005	J20-152-7425J	25.40 mm W x 9.53 mm H	2000
150006	J20-59-7425J	25.40 mm W x 12.70 mm H	2000
150007	J20-257-7425J	20.96 mm W x 6.35 mm H	1500
150011	J20-151-7425J	50.80 mm W x 6.35 mm H	2000
150015	J20-88-7425J	25.40 mm W x 19.05 mm H	2000
150016	J20-256-7425J	33.02 mm W x 15.24 mm H	1500
150018	J20-137-7425J	50.80 mm W x 25.40 mm H	1500
150019	J20-136-7425J	38.10 mm W x 19.05 mm H	1500
150020	J20-37-7425J	38.10 mm W x 12.70 mm H	1500
150022	J20-235-7425J	38.10 mm W x 25.40 mm H	1250
150023	J20-249-7425J	25.40 mm W x 9.53 mm H x 9.53 mm Dia	1500
150024	J20-53-7425J	50.80 mm W x 12.70 mm H	2000
150025	J20-179-7425J	25.40 mm W x 25.40 mm H	1500
150028	J20-258-7425J	38.10 mm W x 44.45 mm H	900
150033	J20-251-7425J	25.40 mm W x 12.70 mm H x 11.18 mm Dia	1500
150541	J20-261-7425J	75.00 mm W x 109.98 mm H	270
150542	J20C-1125-7425J	28.58 mm W x 30.48 m L	1
150543	J20-260-7425J	55.00 mm W x 85.09 mm H	340
150544	J20-262-7425J	105.00 mm W x 154.90 mm H	200
150545	J20-18-7425J	76.20 mm W x 25.40 mm H	1000
150547	J20C-2250-7425J	57.15 mm W x 30.48 m L	1
150548	J20C-4000-7425J	101.60 mm W x 30.48 m L	1

B-403 water dissolvable paper material

The water dissolvable paper label is self-adhesive and extremely easy to apply. Exposing the label to warm water will completely dissolve it within 30 seconds, without damage to the surface it was applied to, and without leaving any residue.

Article No.	Order Ref.	Dimensions	Quantity
151239	J20C-1125-403	28.58 mm W x 30.48 m L	1
151240	J20C-2250-403	57.15 mm W x 30.48 m L	1
151241	J20-55-403	101.60 mm W x 50.80 mm H	250
151243	J20-17-403	50.80 mm W x 25.40 mm H	1500
151244	J20-19-403	76.20 mm W x 50.80 mm H	350

B-2595 vinyl material

Ideal for indoor facility labels, including 5S labels, safety labels, warning labels, pipe markers, equipment labels and visual workplace labels.

Article No.	Order Ref.	Dimensions	Quantity
150010	J20C-1125-2595	28.58 mm W x 30.48 m L	1
150013	J20-260-2595	55.00 mm W x 85.00 mm H	340
150014	J20C-2250-2595	57.15 mm W x 30.48 m L	1
150017	J20C-4000-2595	101.60 mm W x 30.48 m L	1
150027	J20-261-2595	75.00 mm W x 110.00 mm H	270
150032	J20-262-2595	105.00 mm W x 155.00 mm H	200
150546	J20-18-2595	76.20 mm W x 25.40 mm H	1000

B-2551 polyester tags

These tags provide abundant opportunities to colour code tags around your facility, print your own accident prevention, GHS/CLP or confined space tags.

Article No.	Order Ref.	Dimensions	Quantity
150008	J20C-3250-2551	82.55 mm W x 15.24 m L	1
150012	J20C-2500-2551	63.50 mm W x 15.24 m L	1
150030	J20-255-2551	82.55 mm W x 146.05 mm H	100

B-2585 polypropylene labels

The material is ideal for international container labelling and yields vibrant, full colour prints and graphics. BS5609 compliant for marine environments.

Article No.	Order Ref.	Dimensions	Quantity
150750	J20-260-2585	55.00 mm W x 85.00 mm H	340
150751	J20-261-2585	75.00 mm W x 110.00 mm H	270
150752	J20-262-2585	105.00 mm W x 155.00 mm H	200
150758	J20C-2250-2585	57.15 mm W x 30.48 m L	1
150759	J20C-4000-2585	101.60 mm W x 30.48 m L	1

B-2569 polyester material

Ideal for indoor facility labels, including 5S labels, safety labels, warning labels, pipe markers, equipment labels and visual workplace labels on stainless steel and smooth surfaces.

Article No.	Order Ref.	Dimensions	Quantity
150003	J20-261-2569	75.00 mm W x 110.00 mm H	270
150009	J20C-4000-2569	101.60 mm W x 30.48 m L	1
150021	J20C-1125-2569	28.58 mm W x 30.48 m L	1
150026	J20-260-2569	55.00 mm W x 85.00 mm H	340
150029	J20-262-2569	105.00 mm W x 155.00 mm H	200
150031	J20C-2250-2569	57.15 mm W x 30.48 m L	1

B-2475 polyester material

Ideal for product labelling, logos, Right to Know labels and barcode applications. UL approved.

Article No.	Order Ref.	Dimensions	Quantity
152790	J20-59-2475	25.40 mm W x 12.70 mm H	2250
152791	J20-136-2475	38.10 mm W x 19.05 mm H	1000
152792	J20-235-2475	38.10 mm W x 25.40 mm H	750
152793	J20-137-2475	50.80 mm W x 25.40 mm H	750
152794	J20-18-2475	76.20 mm W x 25.40 mm H	750
152795	J20-19-2475	76.20 mm W x 50.80 mm H	250
152796	J20-55-2475	101.60 mm W x 50.80 mm H	250
152797	J20-25-2475	101.60 mm W x 152.40 mm H	80
152798	J20C-1125-2475	28.58 mm W x 30.48 m L	1
152799	J20C-2250-2475	57.15 mm W x 30.48 m L	1
152800	J20C-4000-2475	101.60 mm W x 30.48 m L	1

B-2581 repositionable vinyl material

The material can be printed in full colour at your premises when you need them and they are designed for frequent repositioning.

Article No.	Order Ref.	Dimensions	Quantity
151107	J20C-1125-2581	28.58 mm W x 30.48 m L	1
151108	J20C-2250-2581	57.15 mm W x 30.48 m L	1
151109	J20C-4000-2581	101.60 mm W x 30.48 m L	1

B-2509 magnetic material

The material can be printed in full colour at your premises when you need them and they adhere to metallic surfaces including most industrial shelves and drawers.

Article No.	Order Ref.	Dimensions	Quantity
151114	J20C-2500-2509	63.50 mm W x 7.62 m L	1

B-2550 general purpose paper material

The label is an economical solution for general purpose labelling with a limited lifespan, and can be used to identify packaging.

Article No.	Order Ref.	Dimensions	Quantity
151119	J20-164-2550	22.86 mm W x 22.86 mm H	1200
151120	J20-235-2550	40.39 mm W x 25.40 mm H	1050
151121	J20-88-2550	25.40 mm W x 19.05 mm H	2700
151122	J20-256-2550	33.02 mm W x 15.24 mm H	1600
151123	J20-17-2550	50.80 mm W x 25.40 mm H	1000
151124	J20-53-2550	50.80 mm W x 12.70 mm H	1900
151125	J20-166-2550	63.50 mm W x 31.75 mm H	850
151126	J20-7-2550	69.85 mm W x 31.75 mm H	850
151127	J20-18-2550	76.20 mm W x 25.40 mm H	1050
151128	J20-19-2550	76.20 mm W x 50.80 mm H	550
151129	J20-20-2550	76.20 mm W x 127.00 mm H	200
151130	J20-77-2550	101.60 mm W x 101.60 mm H	280
151131	J20-25-2550	101.60 mm W x 152.40 mm H	180
151132	J20-55-2550	101.60 mm W x 50.80 mm H	550
151133	J20C-2000-2550	50.80 mm W x 30.48 m L	1
151134	J20C-3000-2550	76.20 mm W x 30.48 m L	1
151135	J20C-4000-2550	101.60 mm W x 30.48 m L	1



BIG PRODUCTION DOWN TO THE SMALLEST DETAIL

BradyJet J4000 Colour Label Printer

Complex, highly specific labels in high volumes could mean lower quality print resolution and ineffective identification with other printers. But not with the BradyJet J4000. Maximise productivity and impact with this industry workhorse built to handle the demands of your demanding label and signage needs. Create up to 5,000 impactful full-colour labels per day up to 203.2 mm wide.

- **More time for critical tasks** - When the printer does the busy work, you have more time to focus on the important work needed to keep your operations running smoothly
- **Prints well with others** - Create however it works best for you, then easily print PDFs or from third-party software packages with the optimised Windows driver



Specifications

Software and Connectivity	
Connectivity Options	USB, Ethernet
Software Compatibility	Brady Workstation Windows based driver for 3rd party software use
User Interface Type	PC
Operating System	Windows® 7, Windows® 8, Windows® 10
Physical/Operational Characteristics	
Dimensions	438.15 mm (W) x 231.14 mm (H) x 438.15 mm (D)
Weight (kg)	16
Printer Features	
Recommended Usage per Day	5000
Print Technology	Inkjet
Colour Capability	Full Colour
Print Resolution (dpi)	4800
Max. Print Width (mm)	203.20
Max. Label Width (mm)	203.20
Max. Print Length (mm)	609.60
Media Format	Media on Roll and Ink in Cartridge, supplied separately
Print Speed (mm/sec)	114.30
Includes	(1) BradyJet J4000 Printer (1) Power Cord (1) CMY Ink Cartridge with built in Printhead (1) Pack of 2 Ink Cartridge Storage Caps (1) Media starter roll 101.60 mm wide B-2595 Vinyl (1) USB Cord (1) USB Flash Drive with product information (1) Brady Workstation Basic Suite
Display	LED

Printers

Article No.	Order Ref.	Description
152710	J4000-US	BradyJet J4000 Colour Label Printer
152711	J4000-EU	BradyJet J4000 Colour Label Printer
152712	J4000-UK	BradyJet J4000 Colour Label Printer
310388	J4000-EU-BWSSFD	BradyJet J4000 Colour Label Printer with Safety and Facility ID Software
310389	J4000-EU-BWSPWID	BradyJet J4000 Colour Label Printer with Product and Wire ID Software
310390	J4000-EU-BWSSLABS	BradyJet J4000 Colour Label Printer with Laboratory Software
310391	J4000-UK-BWSSFD	BradyJet J4000 Colour Label Printer with Safety and Facility ID Software
310392	J4000-UK-BWSPWID	BradyJet J4000 Colour Label Printer with Product and Wire ID Software
310393	J4000-UK-BWSSLABS	BradyJet J4000 Colour Label Printer with Laboratory Software
310442	J4000-US-BWSSFD	BradyJet J4000 Colour Label Printer with Safety and Facility ID Software
310443	J4000-US-BWSPWID	BradyJet J4000 Colour Label Printer with Product and Wire ID Software
310444	J4000-US-BWSSLABS	BradyJet J4000 Colour Label Printer with Laboratory Software



Keep your facility safe and compliant by creating custom signs, label and pipemarkers, adding visual safety guidance. Workstation.BradyID.com/SafetyAndFacility



Quickly identify your products and wires with customised text or graphical labels, using serialised or imported data. Quickly identify your products and wires with customised text or graphical labels, using serialised or imported data. Workstation.BradyID.com/ProductandWire



Ensure labels for all your lab samples and equipment are crisp, clear, readable and contain all necessary information. Easily design and create labels for your cryovials, centrifuge tubes, bottles, conicals, slides and other samples in your laboratory. Workstation.BradyID.com/LAB

Ink and storage caps

Article No.	Order Ref.	Description
152714	J40-CMY	BradyJet J4000 Full Colour Ink Cartridge
152713	J40-CAP	J4000 Ink Cartridge Storage Caps

B-7425J chemically resistant polypropylene material

This polypropylene material is ideal for GHS and other full-colour identification applications where resistance to harsh chemicals is required.

Article No.	Order Ref.	Dimensions	Quantity
152778	J40-260-7425J	55.19 mm W x 85.09 mm H	340
152779	J40-262-7425J	104.90 mm W x 154.94 mm H	200
152780	J40-265-7425J	177.80 mm W x 254.00 mm H	100
152781	J40-321-2475J	203.20 mm W x 133.35 mm H	100
152782	J40-268-2475J	203.20 mm W x 279.40 mm H	100
152783	J40C-2250-7425J	57.15 mm W x 30.48 m L	1
152784	J40C-4000-7425J	101.60 mm W x 30.48 m L	1
152785	J40C-6000-7425J	152.40 mm W x 30.48 m L	1
152786	J40C-8000-7425J	203.20 mm W x 30.48 m L	1

B-2585 polypropylene labels

The material is ideal for international container labelling and yields vibrant, full colour prints and graphics. BS5609 compliant for marine environments.

Article No.	Order Ref.	Dimensions	Quantity
150753	J50-260-2585	55.00 mm W x 85.00 mm H	340
150754	J50-261-2585	75.00 mm W x 110.00 mm H	270
150755	J50-262-2585	105.00 mm W x 155.00 mm H	200
150756	J50-267-2585	154.90 mm W x 210.00 mm H	120
150757	J50-268-2585	203.00 mm W x 280.00 mm H	100
150760	J50C-2250-2585	57.15 mm W x 30.48 m L	1
150761	J50C-4000-2585	101.60 mm W x 30.48 m L	1
150762	J50C-6000-2585	152.40 mm W x 30.48 m L	1
150763	J50C-8000-2585	203.20 mm W x 30.48 m L	1

B-2595 vinyl material

Ideal for indoor facility labels, including 5S labels, safety labels, warning labels, pipe markers, equipment labels and visual workplace labels.

Article No.	Order Ref.	Dimensions	Quantity
148651	J50-262-2595	154.94 mm W x 104.90 mm H	200
148653	J50C-4000-2595	101.00 mm W x 30.00 m L	1
148656	J50C-2250-2595	57.00 mm W x 30.00 m L	1
148657	J50-260-2595	85.09 mm W x 55.12 mm H	340
148659	J50-265-2595	254.00 mm W x 177.80 mm H	100
148660	J50-261-2595	109.98 mm W x 74.93 mm H	270
148663	J50C-8000-2595	203.20 mm W x 30.00 m L	1
148664	J50-267-2595	154.94 mm W x 210.00 mm H	120
148666	J50C-6000-2595	152.00 mm W x 30.00 m L	1

B-2569 polyester material

Ideal for indoor facility labels, including 5S labels, safety labels, warning labels, pipe markers, equipment labels and visual workplace labels on stainless steel and smooth surfaces.

Article No.	Order Ref.	Dimensions	Quantity
148652	J50C-6000-2569	152.00 mm W x 30.00 m L	1
148654	J50-262-2569	154.94 mm W x 104.90 mm H	200
148655	J50C-8000-2569	203.20 mm W x 30.00 m L	1
148658	J50C-4000-2569	101.00 mm W x 30.00 m L	1
148661	J50-261-2569	109.98 mm W x 74.93 mm H	270
148662	J50-260-2569	85.09 mm W x 55.12 mm H	340
148665	J50C-2250-2569	57.00 mm W x 30.00 m L	1
148667	J50-265-2569	254.00 mm W x 177.80 mm H	100
148668	J50-267-2569	154.94 mm W x 210.00 mm H	120

B-2581 repositionable vinyl material

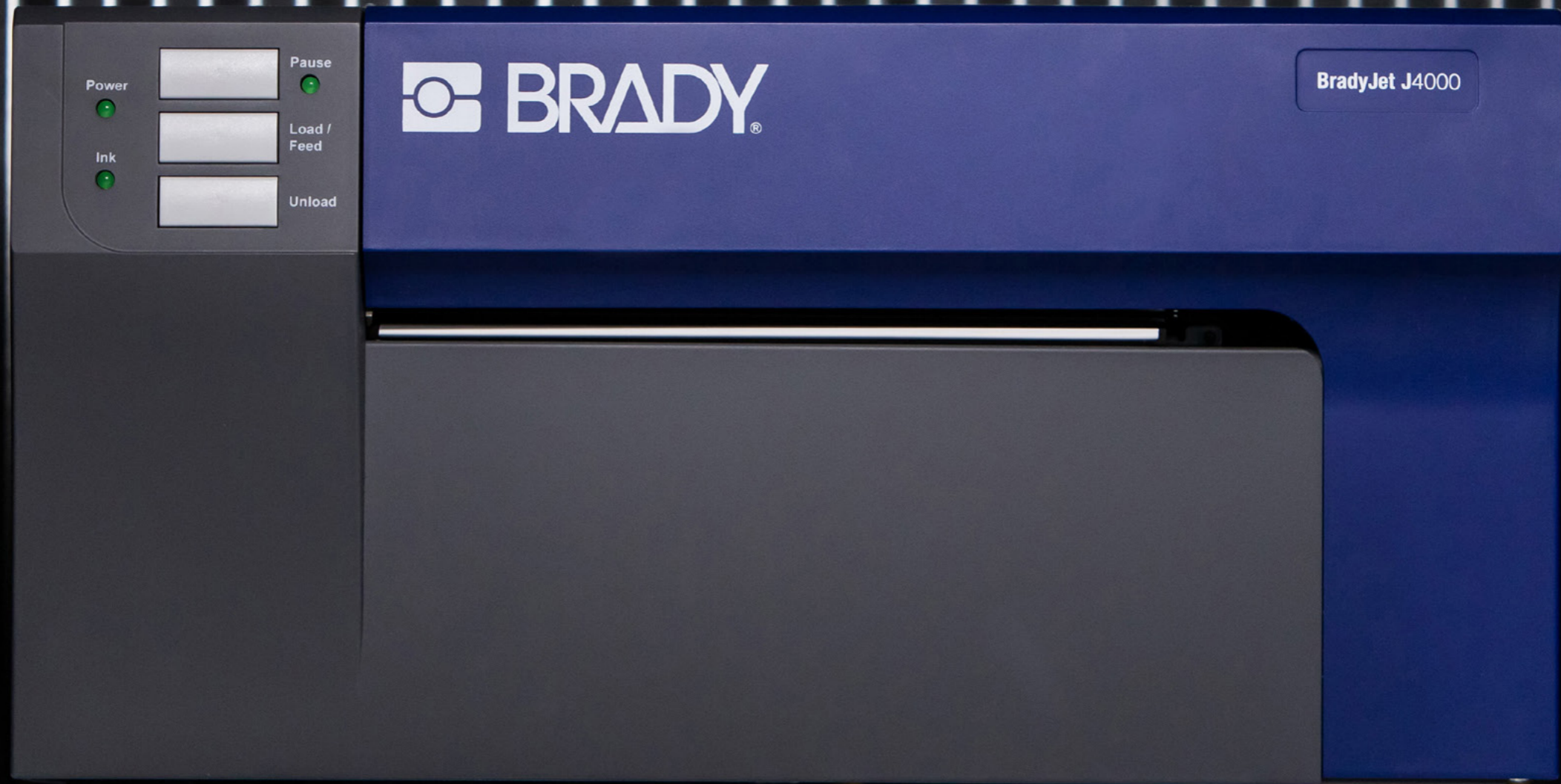
The material can be printed in full colour at your premises when you need them and they are designed for frequent repositioning.

Article No.	Order Ref.	Dimensions	Quantity
151110	J50C-2250-2581	57.15 mm W x 30.48 m L	1
151111	J50C-4000-2581	101.60 mm W x 30.48 m L	1
151112	J50C-6000-2581	152.40 mm W x 30.48 m L	1
151113	J50C-8000-2581	203.20 mm W x 30.48 m L	1

B-2475 polyester material

Ideal for product labelling, logos, Right to Know labels and barcode applications. UL approved.

Article No.	Order Ref.	Dimensions	Quantity
152802	J40-136-2475	38.10 mm W x 19.05 mm H	1000
152803	J40-235-2475	38.10 mm W x 25.40 mm H	750
152804	J40-137-2475	50.80 mm W x 25.40 mm H	750
152805	J40-18-2475	76.20 mm W x 25.40 mm H	750
152806	J40-19-2475	76.20 mm W x 50.80 mm H	250
152807	J40-55-2475	101.60 mm W x 50.80 mm H	250
152808	J40-25-2475	101.60 mm W x 152.40 mm H	80
152809	J40C-1125-2475	28.58 mm W x 30.48 m L	1
152810	J40C-2250-2475	57.15 mm W x 30.48 m L	1
152811	J40C-4000-2475	101.60 mm W x 30.48 m L	1
152812	J40C-8000-2475	203.20 mm W x 30.48 m L	1



Design, print and manage your labelling with software

Brady Workstation Desktop Software

Design and print labels seamlessly with Brady Workstation software suites and apps specially designed for a variety of common industry-related tasks. Along with popular time-saving features like auto-formatting and built-in templates, Brady Workstation features an intuitive interface that integrates seamlessly with the work you do.



Other apps and suites are available:

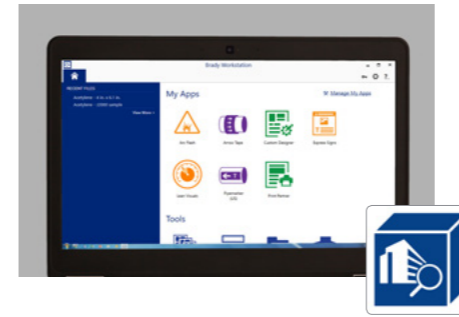


1. Go to workstation.bradyyd.com



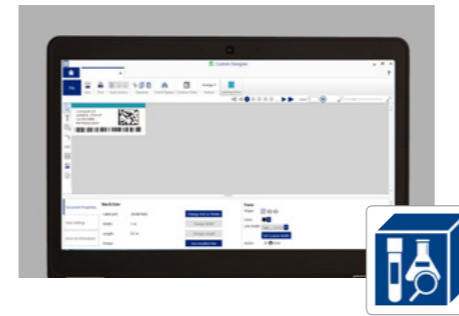
2. Select the apps and suites you want

For more information and to get started, go to workstation.bradyyd.com



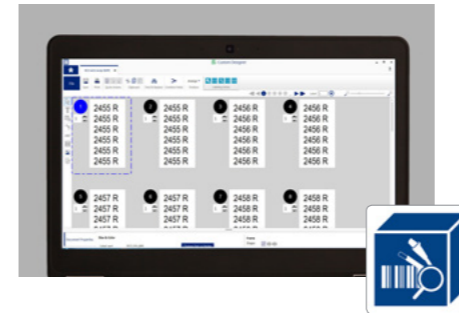
Safety and Facility Identification Suite

Make colourful visuals to keep your facility safe and compliant. This group of apps helps you create signs, labels, pipe markers and lean visuals. Use predefined templates or customise to suit your needs.



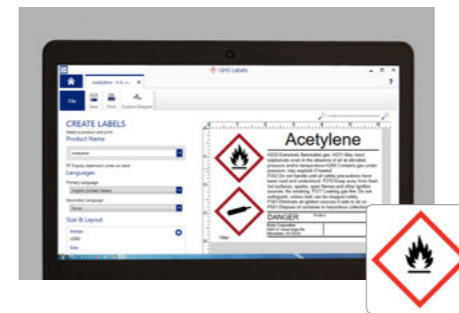
Laboratory Identification Suite

Ensure labels for all your lab samples and equipment are crisp, clear, readable and contain all necessary information. Easily design and create labels for your cryovials, centrifuge tubes, bottles, conicals, slides and other samples in your laboratory.



Product Wire Identification Suite

Quickly identify your products and wires with customised text or graphical labels, using serialised or imported data. Quickly identify your products and wires with customised text or graphical labels, using serialised or imported data.



GHS/CLP Chemical Identification App

Get a streamlined label creation process so you can easily enter the data just once from your SDS sheets, then create and print GHS labels on demand. You can also auto-populate your GHS label using the built-in chemical database.

Africa

Randburg, South Africa
Tel.: +27 11 704 3295
Email: africa@bradycorp.com

Benelux

Zele, Belgium
Tel.: +32 (0) 52 45 78 11
Email: benelux@bradycorp.com

Central & Eastern Europe

Bratislava, Slovakia
Tel.: +421 2 3300 4800
Email: central_europe@bradycorp.com

Denmark

Odense
Tel.: +45 66 14 44 00
Email: denmark@bradycorp.com

France

Roncq
Tel.: +33 (0) 3 20 76 94 48
Email: france@bradycorp.com

Germany, Austria & Switzerland

Egelsbach, Germany
Tel.: +49 (0) 6103 7598 660
Email: germany@bradycorp.com

Hungary

Budaörs
Tel.: +36 23 500 275
Email: central_europe@bradycorp.com

Italy

Gorgonzola
Tel.: +39 02 26 00 00 22
Email: italy@bradycorp.com

Middle East FZE

Dubai, UAE
Tel.: +971 4881 2524
Email: me@bradycorp.com

Norway

Kjeller
Tel.: +47 70 13 40 00
Email: norway@bradycorp.com

Russia

Moscow
Tel.: +7 495 269 47 87
Email: central_europe@bradycorp.com

Spain & Portugal

Madrid, Spain
Tel.: +34 900 902 993
Email: spain@bradycorp.com,
portugal@bradycorp.com

Sweden, Finland, Baltic states

Kista, Sweden
Tel.: +46 (0) 8 590 057 30
Email: sweden@bradyeurope.com

Turkey

Istanbul
Tel.: +90 212 264 02 20 / 264 02 21
Email: turkey@bradycorp.com

UK & Ireland

Banbury, UK
Tel.: +44 (0) 1295 228 288
Email: uk@bradycorp.com

Our mission is to identify and protect people, products and places



To help minimise our impact on the environment, Brady limits its number of reprints.

Updated versions are always available for download on www.bradyeurope.com.



Search for: EUR-M-224-EN

Your distributor

DYNAMIC Systems GmbH
Inninger Straße 11
82237 Wörthsee
Tel.: +49 8153 9096-0, Fax: -96
www.dynamic-systems.de

08/11/2021